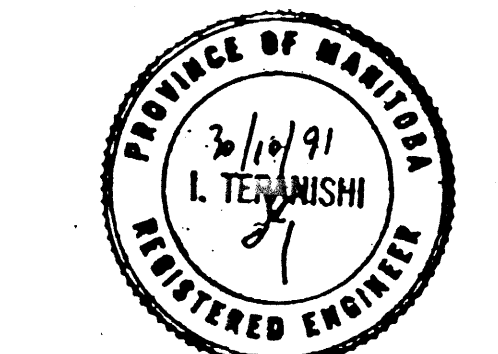


AS BUILT *John Decker*
 OCTOBER 1996



METRIC
 WHOLE NUMBERS INDICATE MILLIMETRES
 DECIMALIZED NUMBERS INDICATE METRES

no.	by	date	approved	revisions

UMA Engineering Ltd.
 Engineers & Planners
 1479 Buffalo Place, Winnipeg, Manitoba, Canada R3T 1L7

UMA Job No. 41-09-2977-095-01

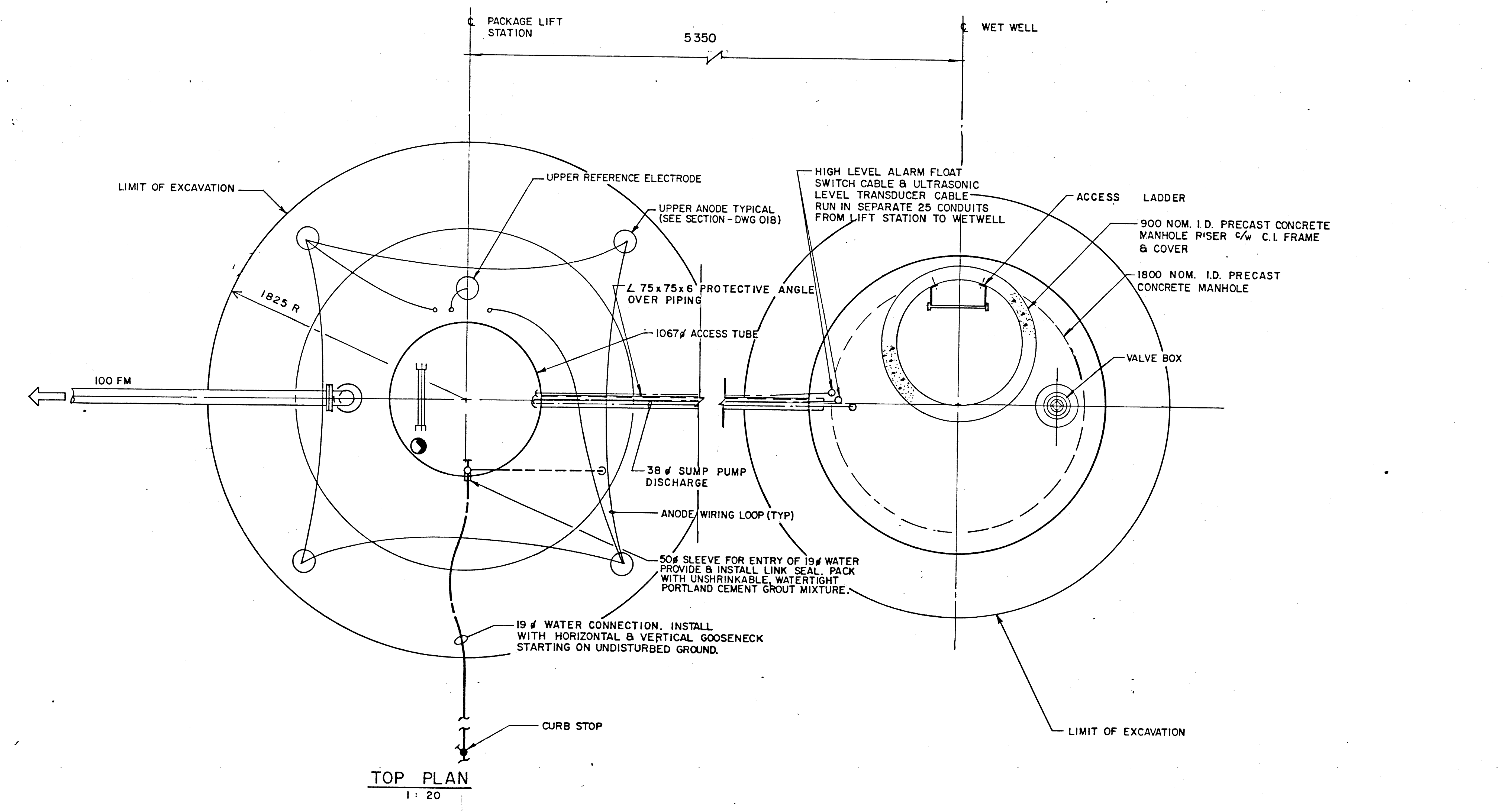
Project title / titre du projet
EXTENSION OF SASKATCHEWAN AVE. PARKING AND MANEUVERING AREAS FOR THE COMBINED SERVICING BLDG.

Drawing title / titre du dessin
MUNICIPAL SERVICES SEWAGE LIFT STATION PLANS

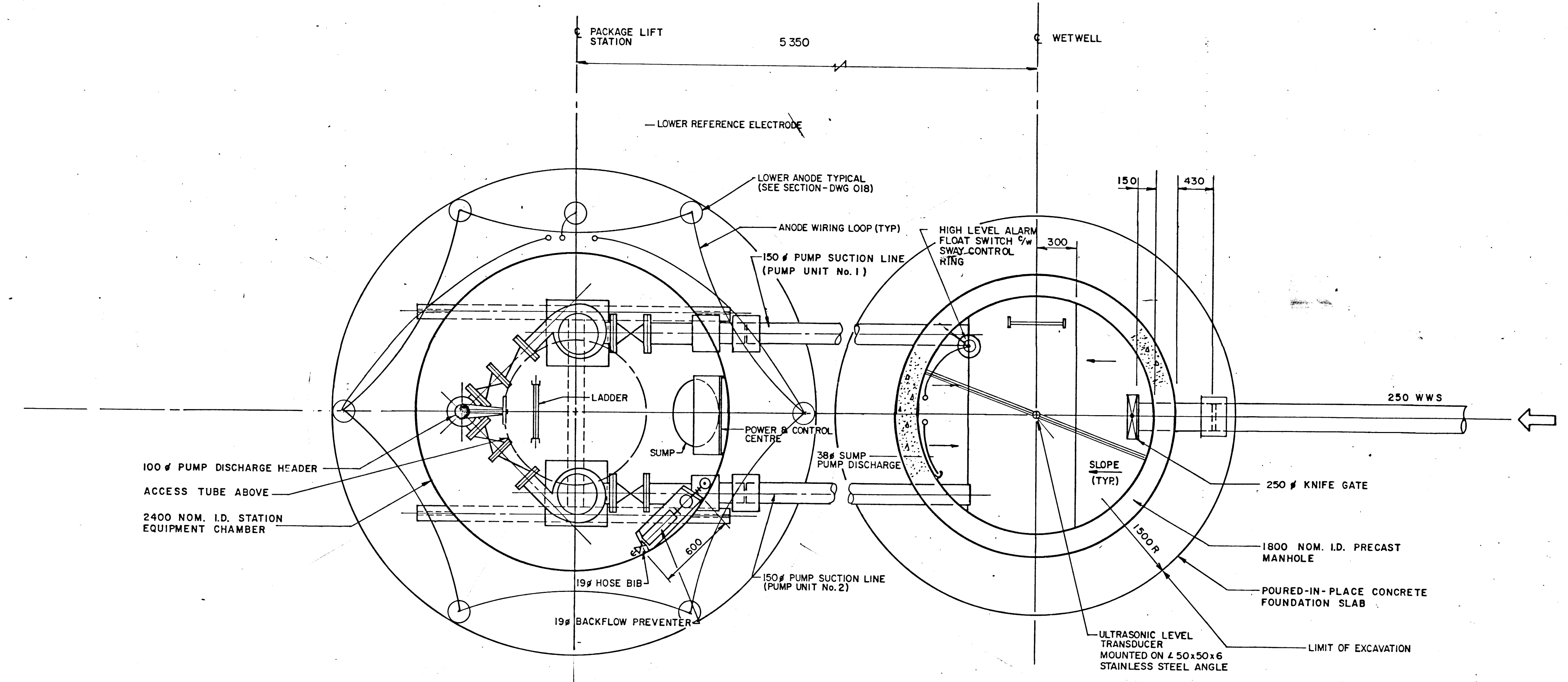
Scale / échelle
 1:20

Designed by / conçu par IT	Date / date OCT/1991
Drawn by / dessiné par JKD	Project no. / no. du projet 797190
Reviewed by / vérifié par <i>[Signature]</i>	Reference / référence 04268
Project Manager / Administrateur de Projets <i>[Signature]</i>	Sheet / feuille P4 of 5

C I 4 6 X 6 2 0 C O I I



TOP PLAN
 1:20

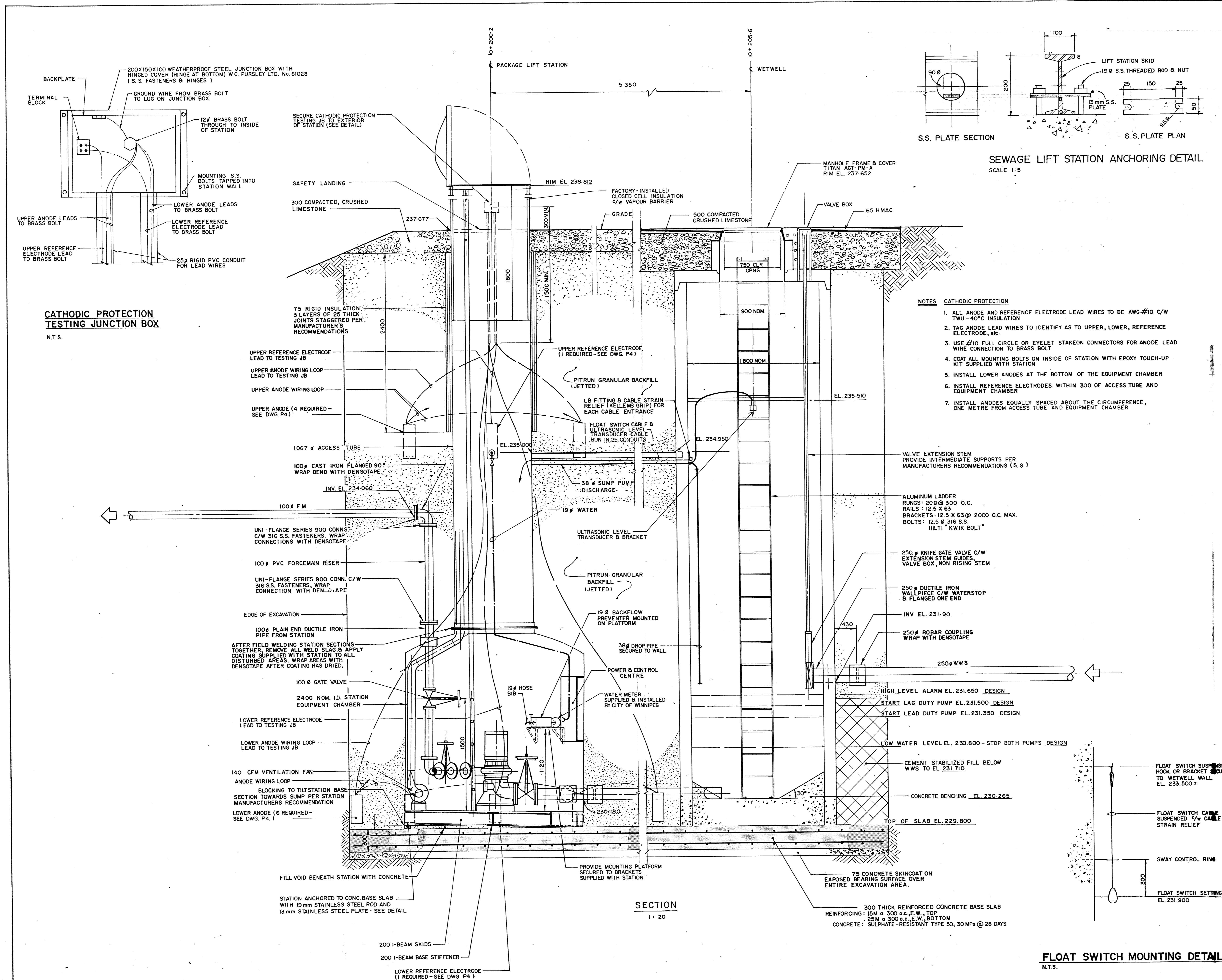


BASE PLAN
 1:20

Ref. or Drawing No. **04268**
 DETAILS

AAZON CANADA
 3130110300

COURTESY OF P.O.



Public Works Canada / Travaux publics Canada

Architectural and Engineering Services / Services d'architecture et de génie

Air Transportation / Transport Aérien

Western Region / Région de l'Ouest

AS BUILT
OCTOBER 1996

METRIC
WHOLE NUMBERS INDICATE MILLIMETRES
DECIMALIZED NUMBERS INDICATE METRES

UMA Engineering Ltd.
Engineers & Planners
1479 Buffalo Place, Winnipeg, Manitoba, Canada R3T 1L7

UMA Job No. 41-09-2977-095-01

EXTENSION OF SASKATCHEWAN AVE. PARKING AND MANEUVERING AREAS FOR THE COMBINED SERVICING BLDG.

MUNICIPAL SERVICES SEWAGE LIFT STATION SECTION

no.	by	date	approved	revisions

AS NOTED

designed by	conc'd per	date	date
IT			OCT/1991
drawn by	designed per	project no.	no. du projet
JKD		797190	
reviewed by	reference	sheet	feuille
	042269	P5 of 5	

C 1 4 6 X 6 2 0 C 0 1 2